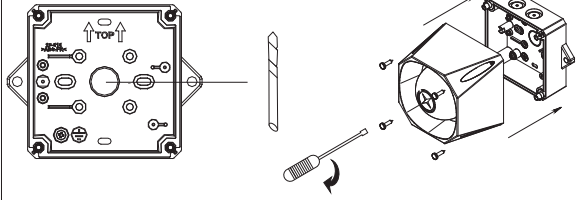
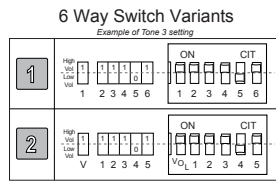
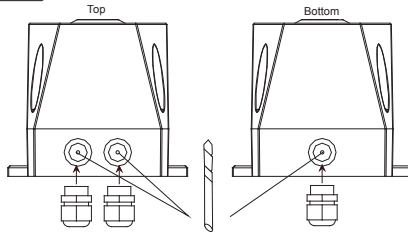
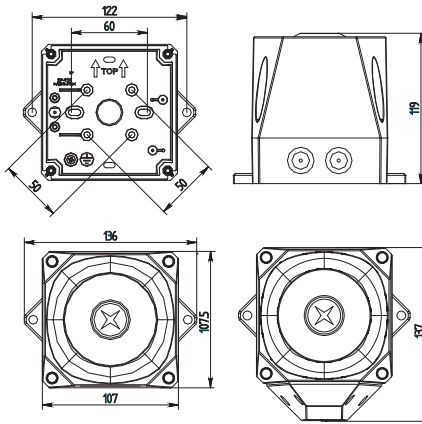
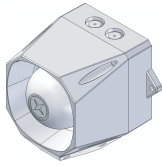
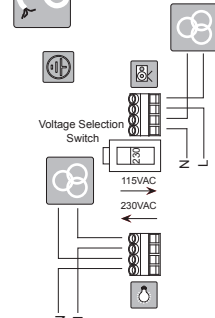


ASD.230.1*

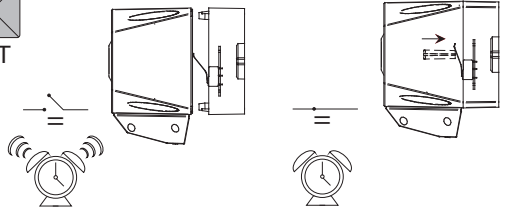


Mains Sounder/Beacon



⚠ Installation must be in accordance with relevant national wiring regulations or codes for the intended application and voltages employed.

⚠ A suitable and readily accessible disconnect device shall be incorporated external to the equipment. An external 1A Anti Surge device is required to protect the installation.



		Sounder/Beacon	
		115VAC	230VAC
		80mA	68mA
		0.28mm ² ~ 2.5mm ²	
		-25°C ~ +70°C	
		ABS V0	
		Type B = IP66	
		32	
		1Hz	

⚠ UWAGA: Instalacja urządzenia musi być wykonana zgodnie z obowiązującymi przepisami prawa oraz wytycznymi dotyczącymi wartości zastosowanych napięć. Podłączenia obwodów elektrycznych może dokonać tylko i wyłącznie osoba posiadające wymagane w tym zakresie uprawnienia do prac elektrycznych.

							@20°C				
							115VAC Sounder + Beacon		230VAC Sounder + Beacon		
						mA	dB(A)	mA	dB(A)		
1	14	11111		800 & 970Hz	2Hz (250ms-250ms)			67	104	43	103
2	14	11110		800 & 970Hz	7Hz (7/s)			64	104	42	103
3	14	11101		800 & 970Hz	1Hz (1/s)			61	105	41	105
4	14	11100		2850Hz	Steady			66	106	41	107
5	4	11011		2400 ~ 2850Hz	7Hz			64	110	41	109
6	4	11010		2400 ~ 2850Hz	1Hz			63	111	41	110
7	14	11001		500 ~ 1200Hz	3.5s Sweep, 0.5s silence, then repeat		Dutch Fire Tone	60	106	41	106
8	14	11000		1200 ~ 500Hz	1Hz		DIN Tone	67	105	42	106
9	4	10111		2400 & 2850Hz	2Hz (250ms-250ms)			65	108	41	107
10	14	10110		970Hz	0.5Hz (1s On / 1s Off)			64	104	42	104
11	14	10101		800 & 970Hz	1Hz (500ms-500ms)		BS Fire Tone	62	104	43	104
12	4	10100		2850Hz	0.5Hz (1s On / 1s Off)			65	106	41	106
13	14	10011		970Hz	0.8Hz (250ms On / 1s Off)			67	103	40	103
14	14	10010		970Hz	Steady		BS Fire Tone	64	104	42	104
15	14	10001		554 & 440Hz	100ms ~ 400ms		French Fire Tone	64	106	41	106
16	16	10000		660Hz	3.3Hz (150ms On / 150ms Off)		Swedish Fire Tone	65	102	42	102
17	17	01111		660Hz	0.28Hz (1.8s On / 1.8s Off)		Swedish Fire Tone	60	103	52	103
18	18	01110		660Hz	0.05Hz (13s Off / 6.5Hz On)		Swedish Fire Tone	66	103	40	103
19	19	01101		660Hz	Steady		Swedish Fire Tone	66	103	39	103
20	20	01100		554 & 440Hz	0.5Hz (1s On / 1s Off)		Swedish Fire Tone	64	107	39	106
21	21	01011		660Hz	1Hz (500ms ~ 500ms)		Swedish Fire Tone	62	103	41	103
22	14	01010		2850Hz	4Hz (150ms On / 100ms Off)		Pelican Crossing	64	106	42	107
23	14	01001		800 ~ 970Hz	50Hz		BS Fire Tone	66	104	43	104
24	4	01000		2400 ~ 2850Hz	50Hz			66	110	42	110
25	25	00111		970Hz	3 x 500ms pulses followed by 1.5s silence then repeat		ISO 8201	66	104	40	104
26	26	00110		970 & 800Hz	3 x 500ms pulsed sweep followed by 1.5s silence		ISO 8201	66	105	40	106
27	27	00101		970 & 800Hz	3 x 500ms pulsed two tone followed by 1.5s silence			67	104	39	103
28	10	00100		800 & 970Hz	2Hz (250ms ~ 250ms)		BS Fire Tone	66	104	40	104
29	988Hz	00011		990 & 650Hz	2Hz (250ms ~ 250ms) (Symphoni Tones)		BS Fire Tone	67	106	42	106
30	510Hz	00010		510 & 610Hz	2Hz (250ms ~ 250ms) (Squashni Micro Tones)		BS Fire Tone	63	106	41	105
31	14	00001		300 ~ 1200Hz	1Hz			63	107	39	109
32	32	00000		510 & 610Hz	1Hz (500ms ~ 500ms)			63	106	40	106

Dystrybucja:

SERWO AUTOMATYKA

Wrocław, Polska

www.serwoautomatyka.com.pl

tel.: 71 794 57 19

fax: 71 791 66 78