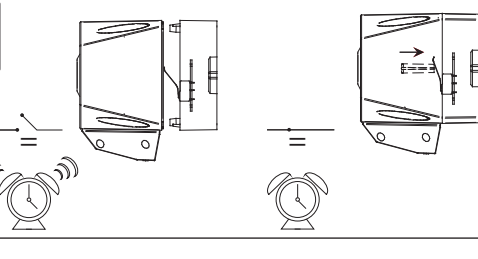
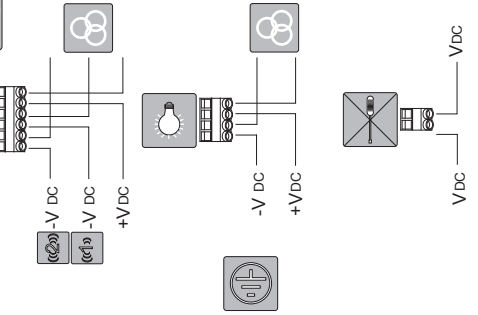
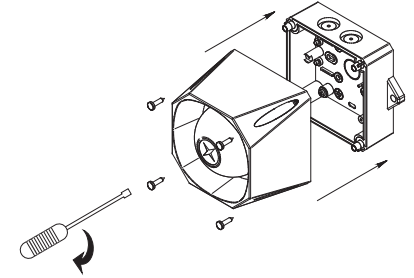
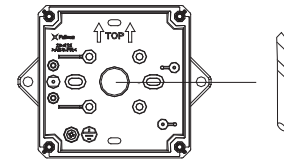
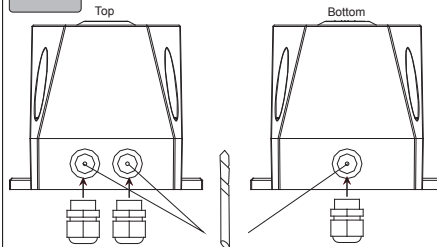
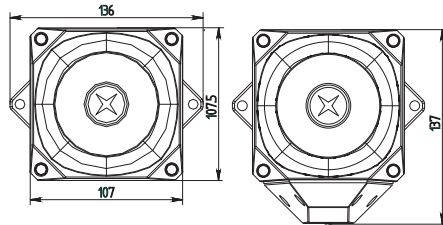
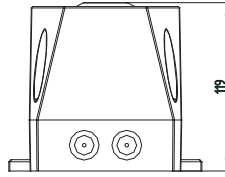
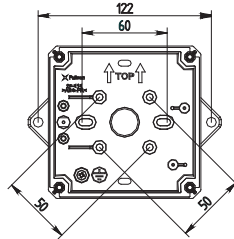
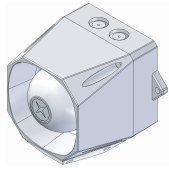


ASD.024.2*



EN54-3			
Sounder/Beacon			
18 ~ 28V	9 ~ 60V		
118 ~ 224mA			
0.28mm ² ~ 2.5mm ²			
-25°C ~ +70°C			
ABS V0			
Type B = IP66			
32			
1Hz			



UWAGA: Instalacja urządzenia musi być wykonana zgodnie z obowiązującymi przepisami prawa oraz wytycznymi dotyczącymi wartości zastosowanych napięć. Podłączenia obwodów elektrycznych może dokonać tylko i wyłącznie osoba posiadająca wymagane w tym zakresie uprawnienia do prac elektrycznych.

Code	Frequency	Pulse	Pattern	Frequency	Pulse	Pattern	Standard	@20°C		EN54-3 Min SPL @ 24Vdc @ Loudest node dB(A)
								mA	dB(A)	
1	14	11111		800 & 970Hz	2Hz (250ms~250ms)		BS Fire Tone	197	102	*
2	14	11110		800 & 970Hz	7Hz (7/s)		BS Fire Tone	198	103	*
3	14	11101		800 & 970Hz	1Hz (1/s)		BS Fire Tone	198	105	*
4	14	11100		2850Hz	Steady			223	107	*
5	4	11011		2400 ~ 2850Hz	7Hz			224	111	*
6	4	11010		2400 ~ 2850Hz	1Hz			223	113	*
7	14	11001		300 ~ 1200Hz	3s Sweep, 0.5s silence, then repeat		Dutch Fire Tone	197	106	*
8	14	11000		1200 ~ 500Hz	1Hz		DIN Tone	118	107	*
9	4	10111		2400 & 2850Hz	2Hz (250ms~250ms)			220	108	*
10	14	10110		970Hz	0.5Hz (1s On / 1s Off)			195	103	*
11	14	10101		800 & 970Hz	1Hz (500ms~500ms)		BS Fire Tone	195	103	*
12	4	10100		2850Hz	0.5Hz (1s On / 1s Off)			200	107	*
13	14	10011		970Hz	0.8Hz (250ms On / 1s Off)			188	102	*
14	14	10010		970Hz	Steady		BS Fire Tone	198	103	*
15	14	10001		554 & 440Hz	100ms ~ 400ms		French Fire Tone	200	105	*
16	16	10000		660Hz	3.3Hz (150ms On / 150ms Off)		Swedish Fire Tone	195	101	*
17	17	01111		660Hz	0.28Hz (1.8s On / 1.8s Off)		Swedish Fire Tone	200	102	*
18	18	01110		660Hz	0.05Hz (13s Off / 6.5Hz On)		Swedish Fire Tone	189	102	*
19	19	01101		660Hz	Steady		Swedish Fire Tone	198	102	*
20	20	01100		554 & 440Hz	0.5Hz (1s On / 1s Off)		Swedish Fire Tone	200	105	*
21	21	01011		660Hz	1Hz (500ms ~ 500ms)		Swedish Fire Tone	193	102	*
22	14	01010		2850Hz	4Hz (150ms On / 100ms Off)		Pelican Crossing	210	106	*
23	14	01001		800 ~ 970Hz	50Hz		BS Fire Tone	197	103	*
24	4	01000		2400 ~ 2850Hz	50Hz			202	110	*
25	25	00111		970Hz	3 x 500ms pulses followed by 1.5s silence then repeat		ISO 8201	194	103	*
26	26	00110		970 & 800Hz	3 x 500ms pulsed sweep followed by 1.5s silence		ISO 8201	196	104	*
27	27	00101		4000Hz	3 x 500ms pulsed two tone followed by 1.5s silence			190	103	*
28	10	00100		800 & 970Hz	2Hz (250ms ~ 250ms)		BS Fire Tone	200	103	*
29	988Hz	00011		990 & 650Hz	2Hz (250ms ~ 250ms) (Symphoni Tones)		BS Fire Tone	210	105	*
30	510Hz	00010		510 & 610Hz	2Hz (250ms ~ 250ms) (Squashni Micro Tones)		BS Fire Tone	202	104	*
31	31	00001		300 ~ 1200Hz	1Hz			211	106	*
32	32	00000		510 & 610Hz	1Hz (500ms ~ 500ms)			205	105	*

Dystrybucja:
SERWO AUTOMATYKA
 Wrocław, Polska
www.serwoautomatyka.com.pl
 tel.: 71 794 57 19
 fax: 71 791 66 78